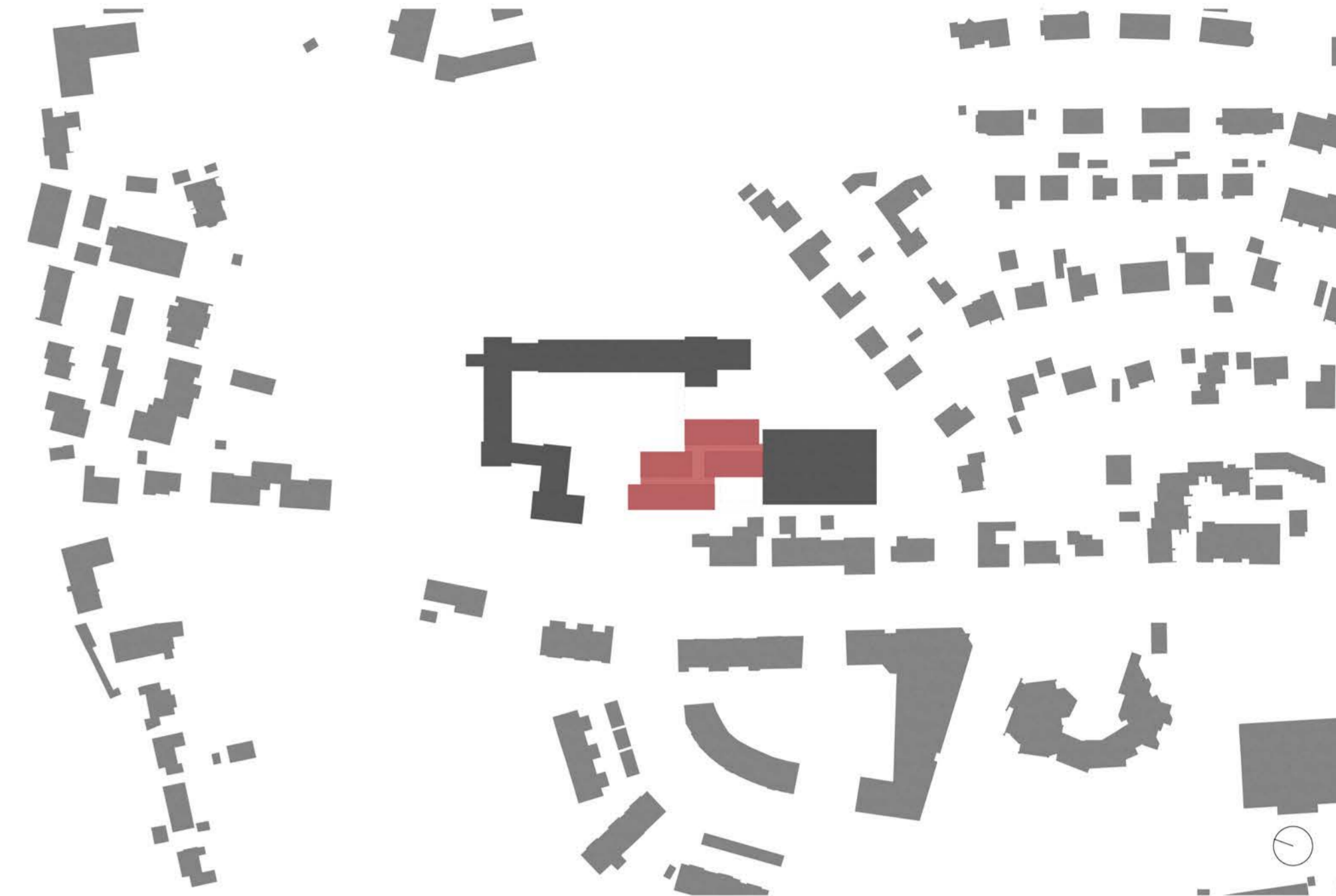




Ansicht Westen M 1:200



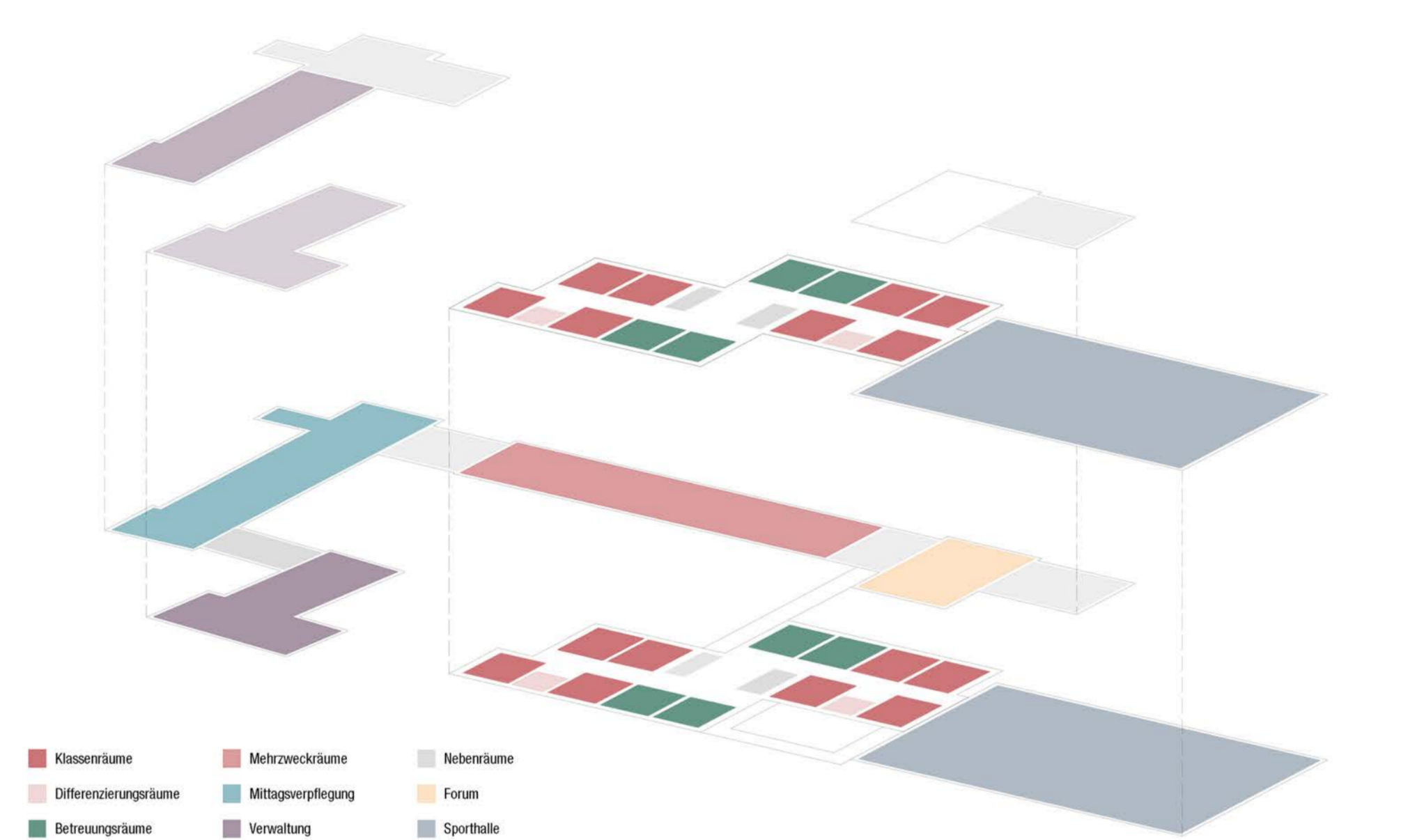
Lageplan M 1:500



Schwarzplan M 1:2000



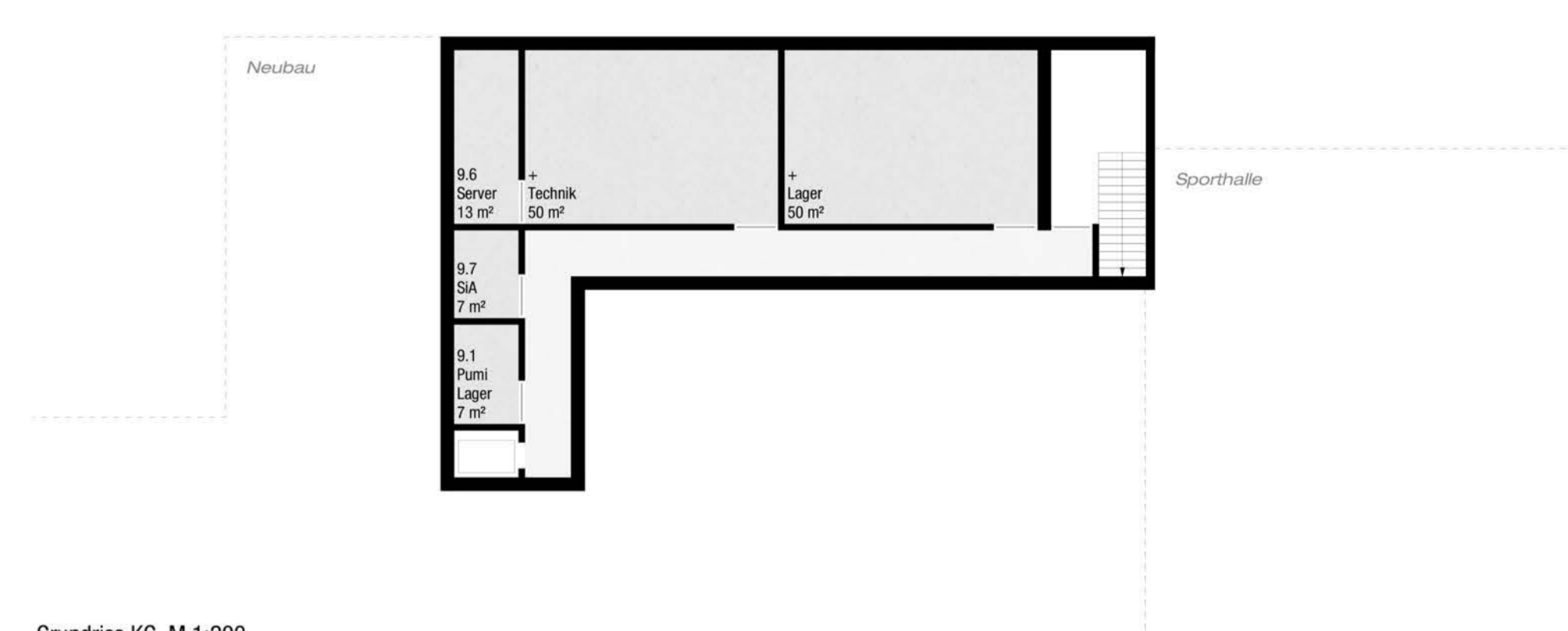
Erschließung M 1:1000



Zonierung M 1:1000



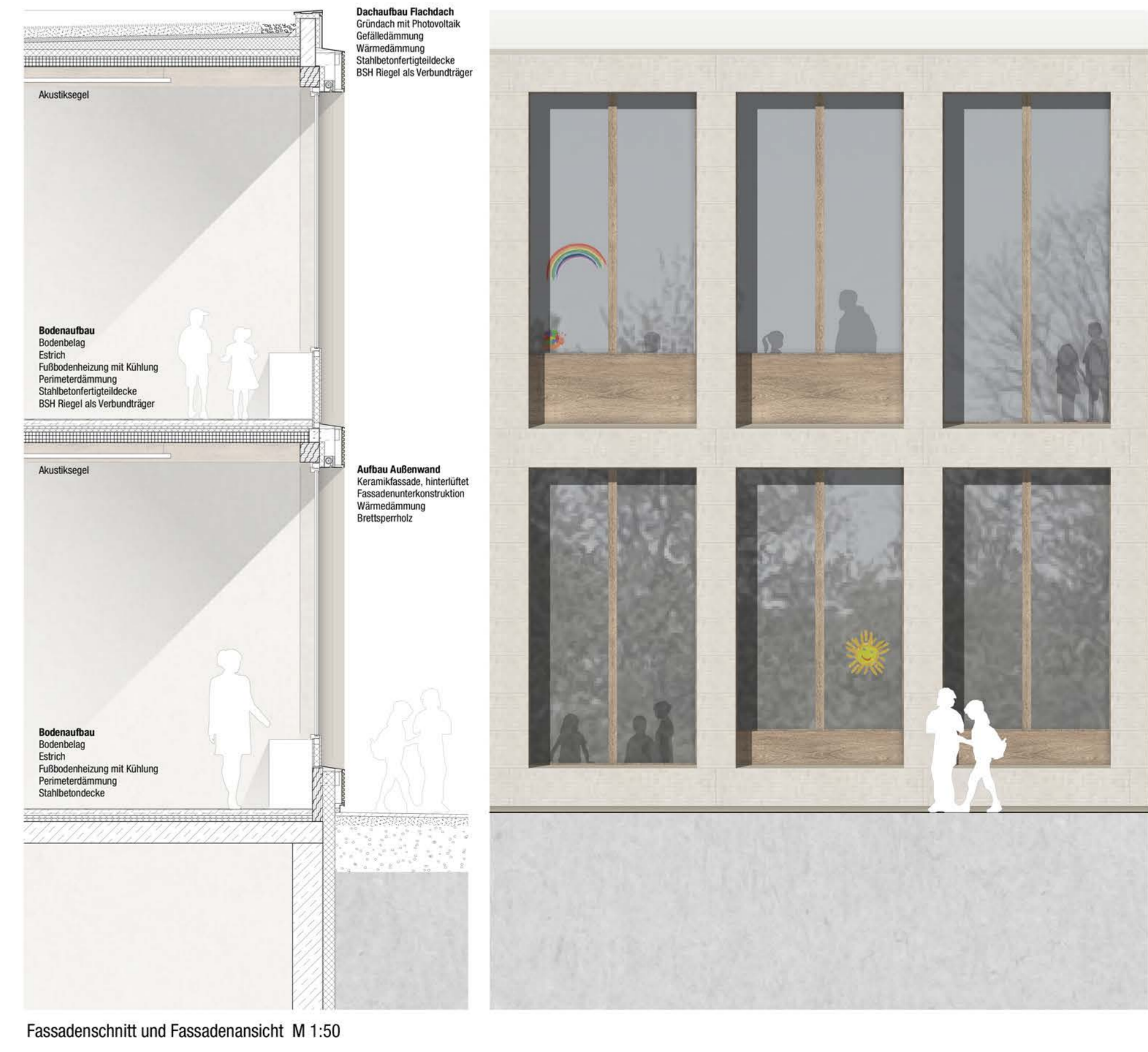
Ansicht Norden M 1:200



Grundriss KG M 1:200



Schnitt A-A M 1:200



Fassadenschnitt und Fassadenansicht M 1:50



Schnitt B-B M 1:200